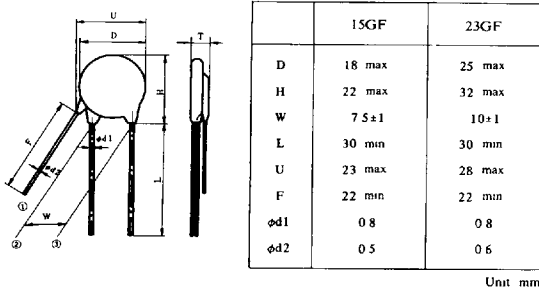


GF-SERIES

(GF Series are combination of TNR G Series with Thermal Fuse)

Operating temperature range: $-40 \sim +85^{\circ}\text{C}$

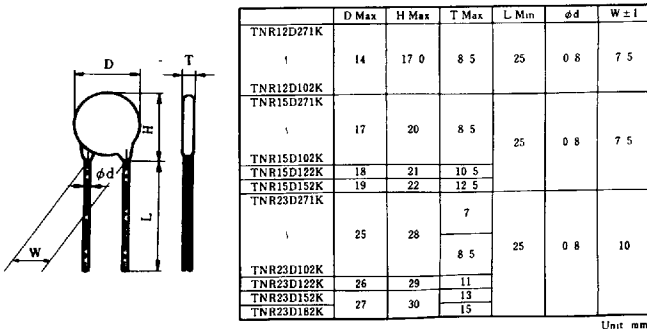
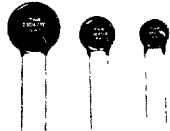
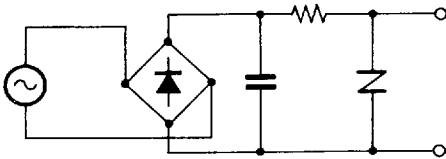
GF Series...With thermal fuse to open at failure



D-SERIES (Voltage Stabilizer)

Operating temperature range: $-40 \sim +85^{\circ}\text{C}$

Storage temperature range: $-50 \sim +125^{\circ}\text{C}$



Model Number	Maximum Applied Voltage (Continuous)		Maximum Peak Current (8/20μs)	Maximum Energy (2ms)	Rated Wattle	Maximum Clamping Voltage	Capacitance (Typical)	Varistor Voltage at 1mA DC	T Max
	AC Vrms	DC V	A	J	W	V50A	pF	V1mA	mm
TNR15GF271K	175	225		50	0.6	440	680	270(243~297)	9
TNR15GF471K	300	385	2,500	80	0.6	765	450	470(423~517)	10
TNR15GF821K	310	670	2 Times	110	0.6	1,340	280	820(738~902)	12
	AC Vrms	DC V	A	J	W	V100A	pF	V1mA	mm
TNR23GF271K	175	225		90	0.8	440	1,350	270(243~297)	9
TNR23GF471K	300	385	4,000	150	1.0	765	1,200	470(423~517)	10
TNR23GF821K	310	670	2 Times	190	1.5	1,340	800	820(738~902)	12

Model Number	Varistor Voltage V1mA (V)	Voltage Ratio V1mA/VO 1mA	Rated Wattle (W)	
TNR12D271K	270(243~297)	1.07 max	0.4	
TNR12D331K	330(297~363)		0.4	
TNR12D391K	390(351~429)		0.4	
TNR12D471K	470(423~517)		0.5	
TNR12D561K	560(504~616)		0.5	
TNR12D681K	680(612~748)		0.5	
TNR12D821K	820(738~902)		0.6	
TNR12D102K	1000(900~1100)		0.6	
TNR15D271K	270(243~297)		1.07 max.	0.6
TNR15D331K	330(297~363)			0.6
TNR15D391K	390(351~429)	0.6		
TNR15D471K	470(423~517)	0.7		
TNR15D561K	560(504~616)	0.7		
TNR15D681K	680(612~748)	0.7		
TNR15D821K	820(738~902)	0.7		
TNR15D102K	1000(900~1100)	0.8		
TNR15D122K	1200(1080~1320)	0.8		
TNR15D152K	1500(1350~1650)	0.8		
TNR23D271K	270(243~297)	1.07 max.	1.0	
TNR23D331K	330(297~363)		1.0	
TNR23D391K	390(351~429)		1.0	
TNR23D471K	470(423~517)		1.2	
TNR23D561K	560(504~616)		1.2	
TNR23D681K	680(612~748)		1.2	
TNR23D821K	820(738~902)		1.2	
TNR23D102K	1000(900~1100)		1.2	
TNR23D122K	1200(1080~1320)		1.5	
TNR23D152K	1500(1350~1650)		1.5	
TNR23D182K	1800(1620~1980)	1.5		

5783311 0001830 483